

艾都找水系列产品画册

Aidu Water Detector Series
Product Brochure

目录

50年发展历程

3-4	公司介绍 Company profile
5-6	快速多通道找水仪 Speedy Version Mutil-channel Water Detector
7-8	找水金箍棒 Golden Rod Water detector
09-10	单通道实时成像找水仪 Single Channel Real-time imaging water detector
11-12	16/32通道高密度找水仪 16/32 channel high density water detector
13-14	专业版电磁找水仪 Professional version MT water detector
15-16	16通道高密度专业电磁找水仪 16 channel high density professional MT electrical underground water detector
17-18	ADMT-1B型电阻率法仪/ADMT-6B型激电仪 ADMT-1B resistivity menter/ADMT-6B DC Resistivity and IP instruments
19-20	APP介绍及使用现场 APP introduction and use site

- 2023 ▶ **AI自动分析 AI automatic analysis**
- AI自动分析功能上线，助力地质勘测进入智能化新时代。并推出快速版找水仪，大地电磁电导率仪，高精度三分量磁力仪等。
The AI automatic analysis function has been launched, helping geological surveying enter a new era of intelligence. And we have launched a fast version of water detector, magnetotelluric conductivity meter, high-precision three component magnetometer, etc.
- 2021 ▶ **云平台大数据自动分析 Cloud platform big data automatic analysis**
- 推出云平台大数据自动分析功能的物探仪系列产品、航空物探系列、地震超前预报系统等。
A series of geophysical prospecting instruments with automatic analysis of big data on the cloud platform will be developed, such as Aerial geophysical prospecting series, earthquake advanced prediction system.
- 2018 ▶ **多通道系列产品 Multi-channel series product**
- 推出多通道系列产品，彻底解决天然电场场源变化的行业性难题。
Launched a series of multi-channel products to completely solve the industry-specific problems of natural electric field source changes.
- 2017 ▶ **手机物探仪 Mobile Geophysical Instrument**
- 推出手机找水仪、物探仪，极大提高地下勘探效率，蓝牙连接手机便可生成地下剖面图。
Launched mobile phone water-finding instruments and geophysical prospecting instruments, which greatly improves the efficiency of underground exploration. The underground profile can be generated by connecting the mobile phone with Bluetooth.
- 2014 ▶ **高新技术企业 High-tech Enterprises**
- 荣获上海市高新技术企业，多次获得国家科技部、上海市及闵行区科委、经委等科技创新基金支持。
AIDU has been awarded as a high-tech enterprise in Shanghai, and has received support from the Ministry of Science and Technology, the Science and Technology Commission of Shanghai, Minhang District, and the Economic Commission for many times.
- 2011 ▶ **可控源大地音频电磁仪 (CSAMT) Controlled Source Audio-Frequency Magneto Tellurics**
- 完成中国科学院地质与地球物理研究所委托的可控源大地音频电磁仪项目，并创立上海艾都能源科技有限公司(股份制)。
Completed the controllable source earth audio electromagnetic instrument project commissioned by the Institute of Geology and Geophysics, Chinese Academy of Sciences, and founded Shanghai Aidu Energy Technology Co, Ltd.(shareholding system).
- 1988 ▶ **大功率电法仪 Hihg-power Electric Instrument**
- 研制出国内首创大功率电法仪器。
Developed the first domestic high-power electrical method instrument.
- 1973 ▶ **D75电法仪 D75 Electric instrument**
- 研制出国内首创的短导线D75电法仪。
Developed the first domestic short-wire D75 electrical method.

拥有 50 年研发经验

More than 50 years of R & D experience

唯专注、故专业，唯先行、故领先

Only focus, so professional, only first, so leading

上海艾都慧测智能科技有限公司50年来一直坚持物探领域仪器研发和迭代升级，技术非常过硬、产品性能稳定可靠，获得几十项国家专利，多次获得国家科技部、上海市及闵行区科委、经委等科技创新基金支持。获得“高新技术”“专精特新”等企业称号。曾参与了中国科学院地质与地球物理研究所、上海地震局等科研院所的项目研发。

Our company has more than 50 years of R & D history, has obtained dozens of invention patents, and has been supported by science and technology innovation funds such as the Ministry of science and technology, Shanghai Municipal Science and Technology Commission, Minhang District Economic Commission and other science and technology innovation funds. It is a national "high-tech" enterprise and a "specialized, special and innovative" enterprise in Shanghai. It has passed the iso9001:2015 quality management system certification.

企业资质 Enterprise qualification

获得“高新技术企业”、“专精特新”企业、科技型中小企业技术创新基金立项、ISO9001:2015质量

管理体系认证、几十项国家专利。

high-tech enterprise、specialized and special new enterprise、ISO9001:2015 Quality management system certification, dozens of technical invention patents.



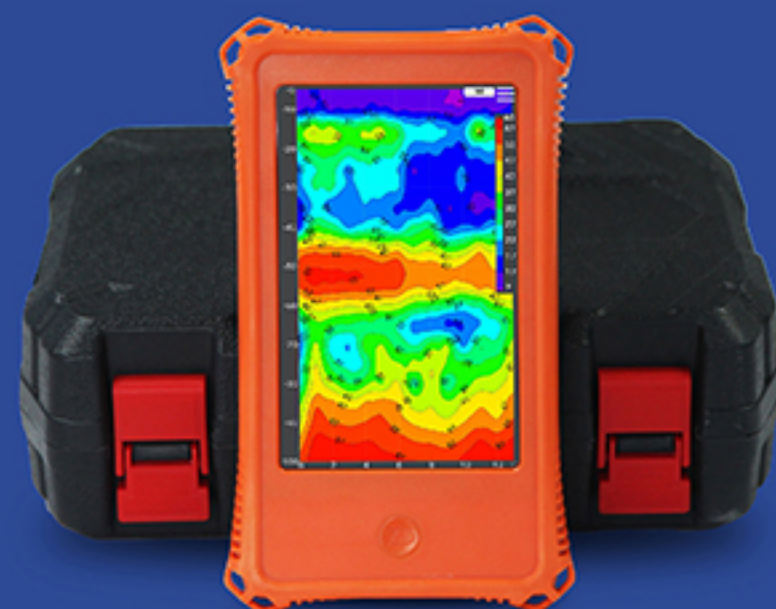
一机兼容 1-60个通道

快速多通道找水仪

Speedy Version Mutil-channel Water Detector

艾都快速版找水仪是一种先进的找水仪器，具有测量快、测量更精准的特点。在外观设计上采用了防水防滑的材质和结构，能够适应各种恶劣的环境条件。同时，对测线、零配件等做了改进，可配置高密度级联电缆扩展升级，最高通道数可配置到60道，并可实现10秒快速完成一次测量，较16/32通道找水仪，快速版找水仪测量效率提升10倍，同时选配高密度级联电缆可满足快速完成大型工程的需求。

Aidu speedy version water detector is an advanced water detector with fast measurement speed and higher accuracy. The appearance adopts waterproof and anti-slip material and structure, which can adapt to various harsh environments. And the measurement lines and spare parts have been improved, high-density cascade cables can be configured for expansion and upgrade. The maximum number of channels can be configured to 60 channels, and a measurement can be completed quickly in 10 seconds. Compared with 16/32-channel water detectors, the measurement efficiency of the speedy version water detector is increased by 10 times, and the use of high-density cascade cables can meet the needs of quickly completing large-scale measurement projects.



仪器特点 / Instrument features

- 01 一机兼容1、12、24、36、48、60道，单道、多道测量集中于一机；
Compatible with 1, 12, 24, 36, 48, and 60 channels, single-channel and multi-channel measurement in one machine.
- 02 深度分段可选，在最大深度范围内可选择起始深度和结束深度；
Depth segments are optional, with optional start and end depths within the maximum depth range.

- 03 磁吸多功能接口(充电、数据传输、连接传感器和MN电缆)；
Magnetic multi-function connection port (charging, data transfer, connecting sensors and MN cables)
- 04 内置高性能锂电池，待机时间10小时，可外接通用手机充电器、充电宝；
Built-in high-performance lithium battery with 10 hours of standby time, can be connected to a universal mobile phone charger and power bank.
- 05 支持无线投屏、多屏互动；
Support wireless screen casting and multi-screen interaction

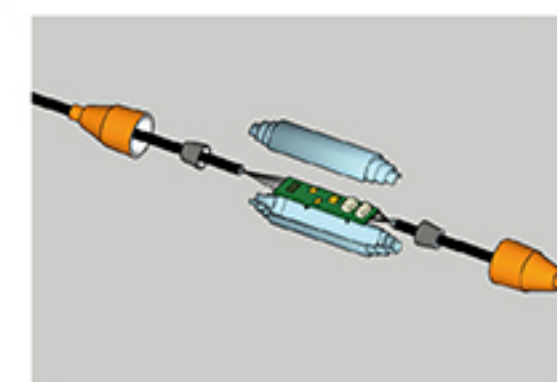
高密度级联电缆

High Density Cascade Cable

高密度级联电缆是ZN系列快速版找水仪通道扩展配件，每条测线为12通道，支持12道于12道对接一级一级的串联，所以叫级联电缆。ZN系列快速版找水仪标准配置为单通道，每多增加一条级联电缆便可升级为12道、24道、48道、60道，而主机还是原来主机，实现无需更换主机的扩展升级，大大降低了用户的升级成本。高密度级联电缆上带有多节点，每个节点一体封装控制芯片，对测量精准控制，并且测线抗拉防水设计，连接方便。



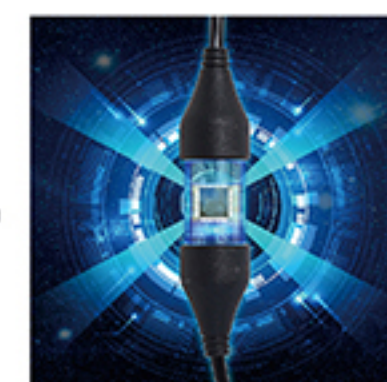
	ADMT-180ZN	ADMT-300ZN	ADMT-600ZN	ADMT-900ZN	ADMT-1200ZN
最大深度/Max Depth	≤180m	≤300m	≤600m	≤900m	≤1200m
深度分层/Scan Interval	5m			10m	
通道兼容/Channel Options	兼容1-60道 (标配单道MN, 多款MN和TT配件可选配) Varying channel options share one single console (extension to multi-channels just by increasing accessories and upgrading to enhanced cable). Multi-channel options support both MN and TT				
测量模式/Sensing Mode	MN/TT				
频率范围/Frequency Range	1-5000HZ				
选频滤波/Filtering	FFT智能选频滤波 / FFT Smart				
分辨率/Discrim	0.01mV±2%				
采样时间/Acquisition Time	10s				
连接方式/Connections	多功能磁吸接头 (含充电、USB、信号输入)、Wifi、蓝牙4.0 All-in-one magnetic connection (charging, USB and single input all in one), wifi, bluetooth 4.0				
显示屏/Display	7寸IP高亮触摸屏、横竖屏自动切换 / 7"IPS high brightness touch screen, Automatic screen rotation				
分辨率/Resolution	1024*800				
操作系统/OS	Android 8.1				
CPU	ROCKCHIP 4核A17 / ROCKCHIP Quad-core Cortex-A17				
GPU	Mali T746				
内存/RAM	DDR3/2GB				
存储器/Storage	16GB				
主要功能/Core Features	自动分析、软件免费升级、通道兼容、深度分段设置、实时曲线图、等值线彩图 All channel options in one, Real-time curve/contour mapping, All-device interconnection, Free software upgrade				
其他功能/Other Features	防水防尘、拍照 (带补光)、无线投屏、多屏互动 Camera (incl. fill flash), Multi-device mirroring, Water and dust proof				
电池功耗/Battery	6000mA/H				
主机重量/Console Weight	< 1kg				



电缆剖析图



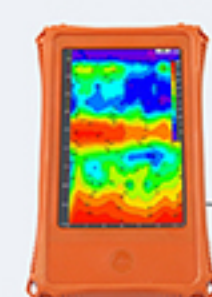
电缆图



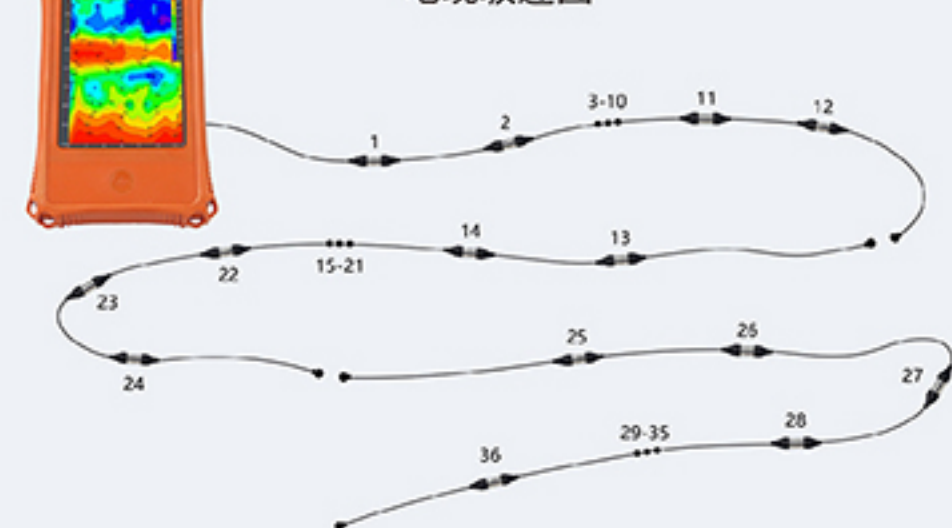
电缆芯片



电缆连接方式



电缆级连图



- 特制多功能电极锤，可锤、可拔、可作为手持式电极手柄、可踩
- 特制合金电极，可锤、可拔、可插入

Special multifunctional electrode hammer, which can be hammered, pulled out, stepped on, and used as a handheld electrode handle.

Special alloy electrode can be hammered, pulled, inserted.

一体式电极锤



型号	间距 (米)	接口	功能	包装尺寸和重量
AD-12D2.5M-CX	2.5	磁吸	扩展电缆，直接连接仪器	20*29*18/2KG
AD-12D5M-CX	5	磁吸		55*19*21/2.8KG
AD-12D2.5M-6P	2.5	航插	扩展电缆，可以作为第二、三、四根扩展至60通道	20*29*18/2KG
AD-12D5M-6P	5	航插		55*19*21/2.8KG

重大改款升级

找水金箍棒，找水更加棒！

Golden Rod water detector, Great groundwater finder.

- 高精度度：**精确了测量频率，提升了测量精度，还优化了接地性能，数据采集稳定性更好。
- 间隔可选：**多种深度间隔可选，可满足用户对深度分层不同的需求。
- 分层可选：**可设置测量起始深度，可满足用户只需要测量某段深度的特殊需求。
- 全新软件：**艾都找水app，软件自带数据处理功能，自动生成2D、3D和切片图。
- AI自动分析：**在线AI自动分析功能，24小时在线数据分析。
- 完全无线：**主机、传感器高度集成，完全无线，单人操作，不受地形和地面限制。
- 智能交互：**通过WIFI连接智能无线主机、手机、平板电脑实时测量，也可以离线测量。
- 灵活多样：**电磁探头和MN电极可选，电极测量方式增加为一头四电极，可横着测也可以竖着测。

- High Precision:** Enhanced measurement frequency for unparalleled accuracy. Improved grounding performance ensures more stable data collection.
- Selectable Scan Density:** Multiple scan slicing intervals to cater to individual preferences, meeting diverse scanning density needs.
- Customizable Depth Range:** Users can choose the starting and ending depths for measurement, catering to specific needs where only a particular depth segment requires analysis.
- Revolutionary Software:** Introducing the innovative AIDU Water app, featuring built-in data processing capabilities for automatic generation of 2D, 3D, and slice images.
- AI Intelligent Analysis:** 24/7 online professional assistance with AI-driven automatic image analysis, and more use more accurate.
- Fully Wireless:** Seamless integration of the main unit, sensors, and communication modules within a 7cm diameter carbon fiber tube, enabling single-person operation without terrain or ground condition constraints.
- Smart Interactivity:** Connect via WIFI to smart consoles, smartphones, or tablets for both online and offline measurements.
- Versatile Design:** Choose between TT electromagnetic sensors or MN electrodes. The improved electrode measurement method utilizes four electrodes concentrated at one end, allowing for both horizontal and vertical measurements.



极简设计 一键测量
There is only one button

WiF连接 手机/专控主机出图
Connect mobile phone or controller

型号	测深（米）	规格（厘米）	测量模式
Model	Depth（m）	Length（cm）	Measuring Model
ADMT-3H	≤300	34	MN
ADMT-3HT2	≤300	65	MN/TT
ADMT-3HT3	≤300	79	MN/TT
ADMT-8HT2	≤800	65	MN/TT
ADMT-8HT3	≤800	79	MN/TT

- 完全无线 精准提升**
Complete wireless precision improvement
- 分层可选 间隔可选**
Layering and interval optional
- AI自动分析 离线测量**
AI automatic analysis offline measurement
- 自动2D/3D/切片图**
Automatic 2D/3D/Slice Map

找水金箍棒是解决以往找水仪接线和拉线麻烦而全新推出的一款高度集成物联网智能物探找水仪，将主机、TT传感器、MN电极、电池及无线通讯模块高度集成在一根 $\phi 7\text{cm}$ 的碳纤维管内，极像传说中金箍棒而得名。是在MT电磁法基础上，分时测量天然电场或电磁场强弱来反应地下电阻率的变化，从而来分析判断地下水的位置、深度等相关信息。无线连接手机、平板电脑和专控主机来操控和自动成图，金箍棒内置锂电池，开机便可测量，没有任何一根连线，实现完全无线操作。

Golden-Rod Groundwater Detector is a revolutionary, highly integrated IoT-enabled geophysical instrument for groundwater exploration, designed to eliminate the inconvenience of traditional wired water detectors. This cutting-edge device combines the main unit, TT sensor, MN electrodes, battery, and wireless communication module into a single, sleek carbon fiber tube with a diameter of 7cm. Inspired by the legendary "golden cudgel" from Chinese mythology, it features a unique and iconic design. Golden-Rod Groundwater Detector Leveraging the principles of the Magnetotelluric (MT) method, continuously measures the natural electric and electromagnetic fields to detect changes in subsurface resistivity. This allows for the precise identification of groundwater location, depth, and other relevant information. Offering unmatched convenience, it connects wirelessly via Wi-Fi to smartphones, tablets, and consoles, enabling seamless operation and automatic mapping capabilities. With an internal lithium battery, it is ready to measure as soon as it is powered on, operating entirely without cables to provide a truly wireless experience.

单通道实时成像找水仪

Single Channel Real-time imaging water detector

自动成像：7寸安卓系统触摸屏实时成2D、3D和曲线图像；

精准稳定：50多年迭代升级，测量精度高、性能稳定；

三屏互通：仪器屏、手机屏、电脑屏三屏互通；

智能灵活：MN电极和TT探头测量可切换，可选配无线探头或找水金箍棒。

Automatic imaging: Real-time 2D, 3D and curve images can be generated on the 7-inch Android system touch screen;

Accurate and stable: Iterative upgrade for more than 50 years, high measurement accuracy and stable performance;

Three screen intercommunication: instrument screen, mobile phone screen, computer screen intercommunication;

Intelligent and flexible: MN electrode and TT probe can be switched for measurement, wireless probe or Golden Rod for finding water is optional.



MN电极测量

经典10米线连接
插地便可测量
两人测量为宜
【标配】

MN ELECTRODE MEASUREMENT
CLASSIC 10-METER MEASUREMENT LINE
CONNECTION, PLUG-IN MEASUREMENT



有线连接电磁探头

适应水泥、岩石、
动土等任何地面
单人可完成测量
【选配】

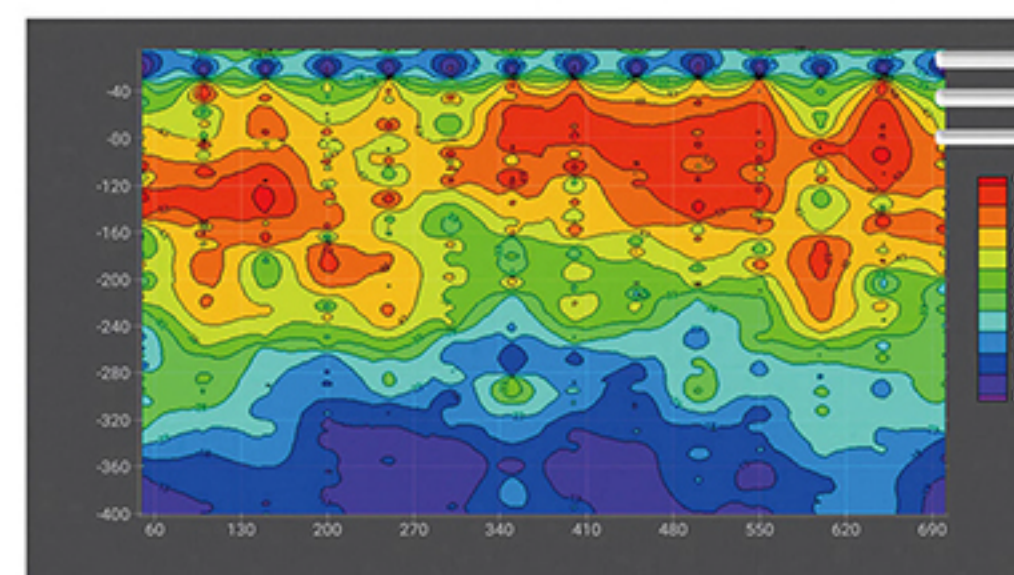
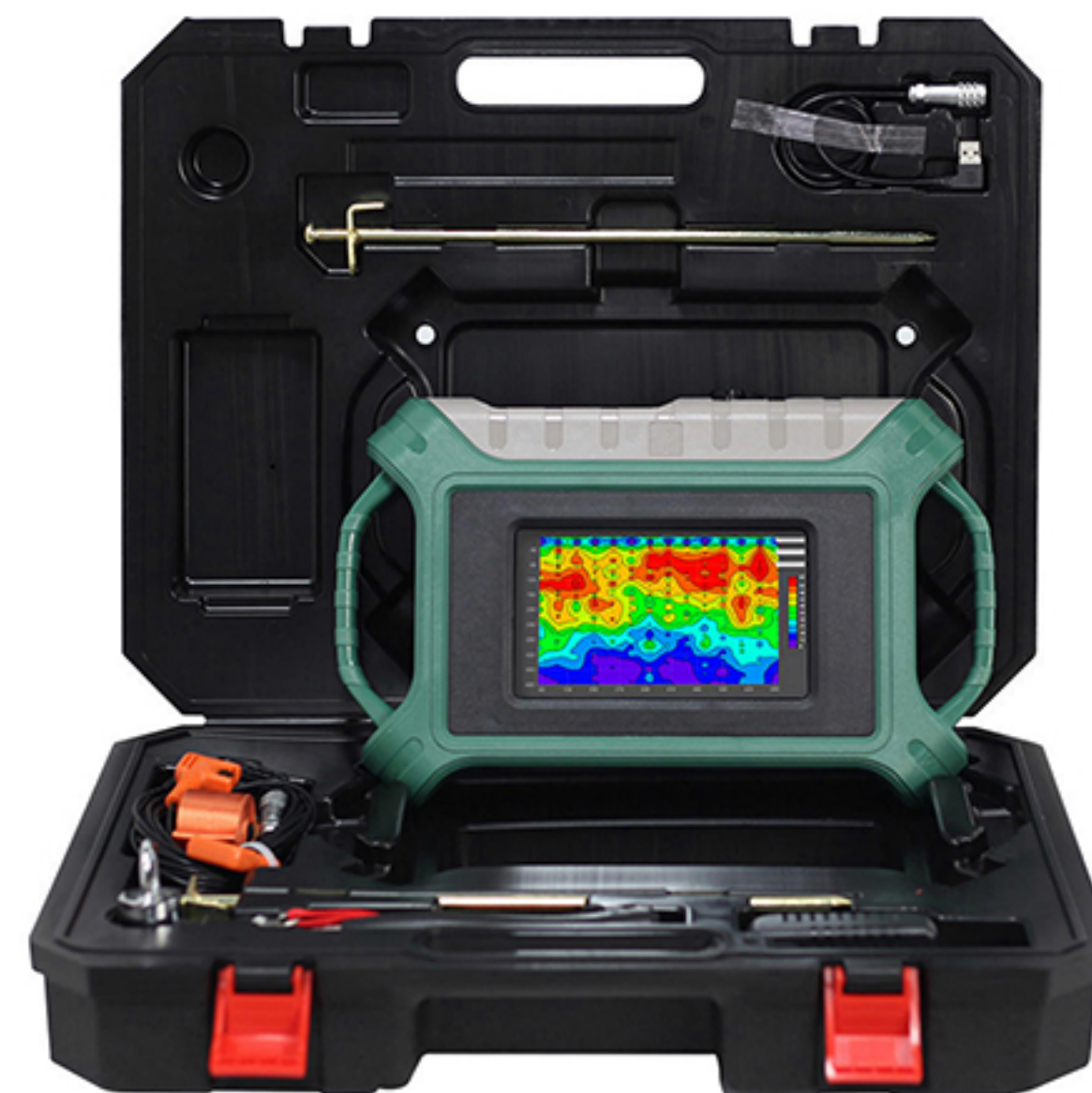
WIRED CONNECTION ELECTROMAG
NETIC PROBE
ADAPT TO HARD GROUND



无线连接金箍棒

全无线模式
适应水泥、岩石、
动土等任何地面
单人可完成测量
【选配】

WIRELESS CONNECTION GOLDEN
ROD
FULL WIRELESS MODE, ADAPT TO HARD
GROUND, COMPLETE MEASUREMENT BY
ONE PERSON



深度可调 精准稳定

Adjustable depth, precise and stable

7寸IPS广视角可视触摸屏

7 inch IPS wide viewing angle visual touch screen

现场成图、多种连接方式

On-site drawing, multiple connection methods

型号 Model	可调深度 (m) Adjustable depth	测量模式 Measure model
ADMT-300S-X	100/200/300	MN/TT
ADMT-600S-X	100/200/300/400/500/600	MN/TT

ADMT-300S-X/600S型单通道实时成像找水仪是在MT电磁法基础上，分时测量天然电场或电磁场强弱来反应地下电阻率的变化，从而来分析判断地下水的位置、深度等相关信息。精美大气外观，标配7寸广角触摸屏实时成像，智能精准，深度可调整。标配MN电极测量，可选有线探头、无线连接找水金箍棒等三种测量模式。

ADMT-300S-X/600S single-channel real-time imaging water detector is based on the MT electromagnetic method. It measures the natural electric field or electromagnetic field strength in a time-sharing manner to reflect the change of underground resistivity, so as to analyze and judge the location and depth of groundwater. Exquisite and atmospheric appearance, standard 7-inch wide-angle touch screen real-time imaging, intelligent and precise, depth adjustable. Three measurement modes like standard MN electrode measurement, optional wired probe, and wireless connection to water detector gold bar series.



16通道高密度找水仪

16 channel high density water detector

准确率比单通道提升30% ，效率提升3倍！

The accuracy rate is 30% higher than that of a single channel, and the efficiency is 3 times higher!

采用16(32)通道同时输入测量，获取相对稳定场源，解决了天然电场随时变化的缺陷；在MT电磁法基础上，分时测量天然电场或电磁场强弱来反应地下电阻率变化，从而来分析判断地下水位置、深度等相关信息。减少MN电极移动误差，多次重复测量，剖面图一致性好。

16 (32) channels are used for simultaneous input measurement to obtain a relatively stable field source, which solves the defect of the natural electric field changing at any time; on the basis of the MT electromagnetic method, the natural electric field or electromagnetic field strength is measured in time to reflect the change of underground resistivity, thereby To analyze and judge related information such as the location and depth of groundwater. Reduce the error of MN electrode movement, repeat the measurement many times, and have good consistency of the profile.

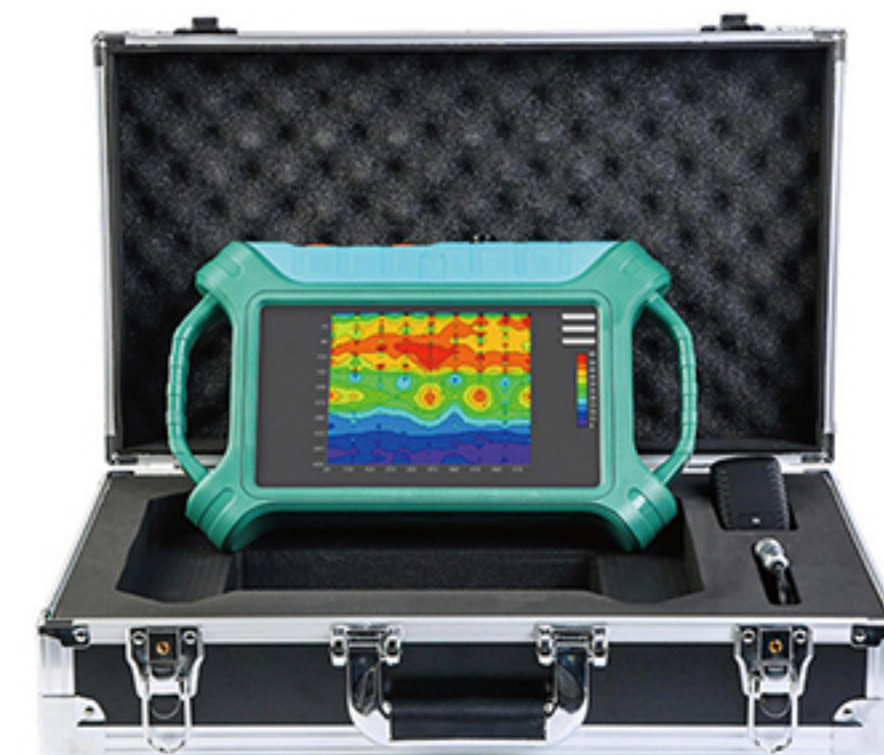


32通道高密度找水仪

32 channel high density water finder

准确率比单通道提升50%，效率提升6倍！

The accuracy rate is 50% higher than that of a single channel, and the efficiency is increased by 6 times!



外观精美大气，标配7寸广角触摸屏实时成像，智能精准，深度可调整。标配16(32)通道MN电极测量，可选有线探头、无线连接找水金箍棒等三种测量模式。获得多项发明专利，特别是“地球电磁场场源修正的物探方法及测量装置”解决了天然电场场源强度大小不一致及随时变化的缺点。

The appearance is exquisite, the standard 7-inch wide-angle touch screen real-time imaging, intelligent and precise, the depth can be adjusted. Standard configuration of 16 (32) channel MN electrode measurement, three measurement modes such as wired probe and wireless connection to water detector gold rod are optional. Obtained a number of invention patents, especially the "geophysical prospecting method and measurement device for correction of the earth's electromagnetic field source", which solves the shortcomings of inconsistency and change of the natural electric field source intensity.

型号 Model	可调深度 Depth (m)
ADMT-300SX-16D	100/200/300
ADMT-500SX-16D	100/200/300/400/500
ADMT-1200SX-16D	100/200/300/400/500/600/800/1200
ADMT-2000SX-16D	100/200/300/400/500/600/800/1200/2000
ADMT-3000SX-16D	200/300/400/500/600/800/1200/2000/3000

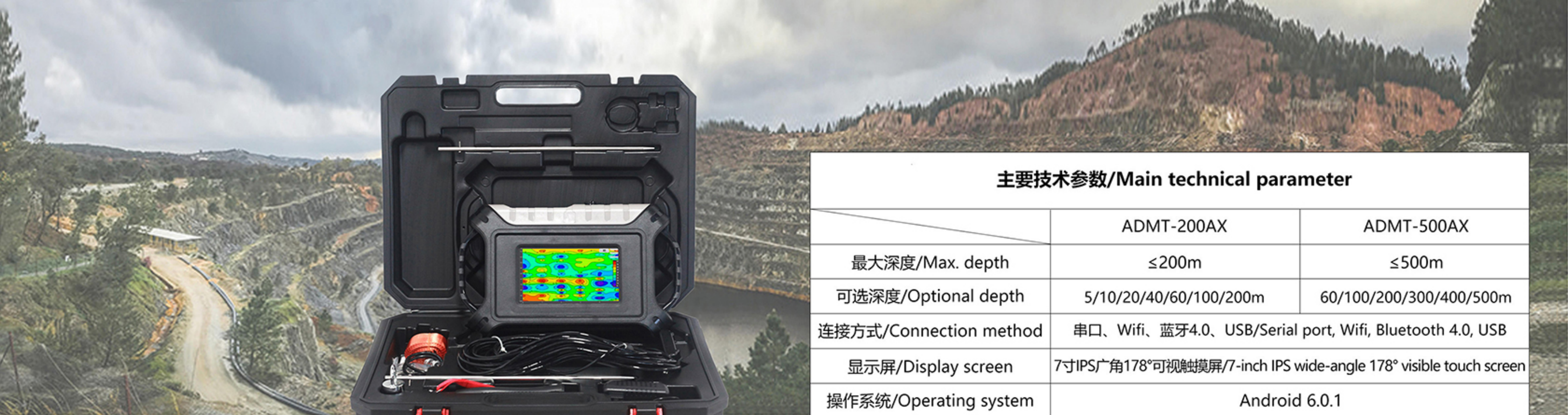
深度可调，通道数可选
精准稳定，一致性很好
即时成像，高密度输入

Adjustable depth The number of channels is optional

Accurate and stable with good consistency

Instant imaging High-density input:

型号 Model	可调深度 Depth (m)
ADMT-400SX-32D	100/200/300/400
ADMT-600SX-32D	100/200/300/400/500/600
ADMT-1200SX-32D	100/200/300/400/500/600/800/1200
ADMT-3000SX-32D	100/200/300/400/500/600/800/1200/2000/3000
ADMT-4000SX-32D	100/200/300/400/500/600/800/1200/2000/3000/4000



专业版电磁法找水仪 ADMT-200AX &ADMT-500AX

Professional version MT water detector

- 精准稳定：50多年迭代升级，精准稳定；
- 两种参数：MN/TT分别测量电磁和电场信号；
- 操作智能：数据共享、可选配无线探头或金箍棒数据。
- Accurate and stable: Iterative updated, precise and stable for more than 50 years;
- Two parameters: MN/TT measures electromagnetic and electric field signals respectively;
- Operational intelligence: data sharing, optional wireless probe or golden hoop data.
- Adjustable depth, precise and stable; 7 inch IPS wide viewing angle visual touch screen;
- Multiple connection methods such as serial port/Bluetooth/WiFi; On-site drawing, removable battery



主要技术参数/Main technical parameter		
	ADMT-200AX	ADMT-500AX
最大深度/Max. depth	≤200m	≤500m
可选深度/Optional depth	5/10/20/40/60/100/200m	60/100/200/300/400/500m
连接方式/Connection method	串口、Wifi、蓝牙4.0、USB/Serial port, Wifi, Bluetooth 4.0, USB	
显示屏/Display screen	7寸IPS广角178°可视触摸屏/7-inch IPS wide-angle 178° visible touch screen	
操作系统/Operating system	Android 6.0.1	
CPU	ARM Cortex-A7 8核CPU 2.0Hz/ARM Cortex-A7 8 core CPU 2.0Hz	
主要功能 The main function	深度可选、实时2D/3D绘图、电池可拆卸 Depth optional, real-time 2D/3D drawing, battery can be removable.	
测量模式/Measurement mode	MN/TT	
测量范围/Measuring range	±5V	
频率范围/Frequency Range	1-8KHZ	
选频滤波 Frequency selective filtering	预设选频和智能选频、模拟+数据滤波1-16次叠加可选 Preset frequency selection and intelligent frequency selection, analog + data filtering 1-16 times superposition optional	
分辨率/Resolution	0.1mV±2%	
采样时间/Sampling time	100-360(s)	
电池功耗/Battery	600mA/H	
主机重量/Host weight	2.3kg	

ADMT-200AX/500AX型单通道MT电磁仪简化了MT电磁法来分时测量天然电场或电磁场，使得仪器智能轻便，方便携带。标配MN电极测量MT电场，也可选配电磁探头测量MT电磁场，可以反映反演地下不同地质体的视电阻率变化。精美大气外观，标配7寸广角触摸屏实时成像，智能精准，深度可调整。

The ADMT-200AX/500AX single-channel MT electromagnetic instrument simplifies the MT electromagnetic method to measure natural electric or electromagnetic fields in time sharing, making the instrument smart, portable, and convenient to carry. The standard MN electrode measures the MT electric field, and an electromagnetic probe can also be used to measure the MT electromagnetic field, which can reflect the inversion of the apparent resistivity changes of different underground geological bodies. It has characteristics with exquisite appearance, standard 7-inch wide-angle touch screen real-time imaging, and it is intelligent and precise, and its depth adjustable.



16通道高密度专业电磁找水仪

ADMT-200AX-16D & ADMT-500AX-16D

16 channel high density professional MT electrical underground water detector

采用16通道高密度测量，大数据分析，不仅获取稳定场源，解决了天然电场随时变化的缺陷，而且也解决了传统高密度电法的深度限制，优化升级了传统意义上MT电磁法，通道数量、电场、电磁场测量模式可选，还可配高性能电磁探头做两磁两电MT测量。

The 16 channel high-density MT electrical instrument adopts 1-16 channels for simultaneous input measurement, which solves the defect of MT field source changing at any time and obtains stable field source. Breaking through the depth limit of traditional high-density electrical method instrument. This instrument optimizes and upgrades the traditional MT electromagnetic method, the number of channels & electric field & electromagnetic field measurement mode is optional, and it can also be equipped with a high-performance electromagnetic probe to do two-magnetic and two-electric MT measurement.



	ADMT-200AX-16D	ADMT-500AX-16D
最大深度/Max. depth	≤200	≤500
通道输入/Channel Input	16通道同时输入，最大电极间距5m 16 channels are input at the same time, and the maximum electrode spacing is 5m	
通道选择/Channel selection	1-14 Channels	
可选深度/Optional depth	5/10/20/40/60/100/200m	60/100/200/300/400/500m
深度分层/Depth layering	10-100	
连接方式/Connection method	串口、wifi、蓝牙4.0、USB/Serial port, Wifi, Bluetooth 4.0, USB	
显示屏/Operation display	10.1寸IPS广角178°可视触摸屏 (1024×600) 10.1 inch IPS wide-angle 178° visible touch screen(1024×600)	
操作系统/Operating system	安卓6.0.1 运行内存1G 内存8G (可扩展128G) Android6.0.1 running memory 1G memory 8G(expandable 128G)	
CPU	ARM Cortex-A7 8核CPU 2.0Hz / ARM Cortex-A7 8 core CPU 2.0Hz	
GPU	OpenGL ES 2.0	
主要功能/The main function	深度可选、实时2D/3D绘图、电池可拆卸 Depth optional, real-time 2D/3D drawing, battery can be removable.	
频率范围/Frequency range	1-8K HZ	
测量模式/Measurement mode	MN/TT	
分辨率/Resolution	0.001mV±2%	
采样时间/Sampling time	40-3600s	
电池功耗/Battery	900mA/H	
主机重量/Host weight	3kg	



ADMT-1B型电阻率法仪 ADMT-1B resistivity meter

主要技术指标 Main Specifications

电压测量范围: $\pm 2500\text{mV}$
 电压分辨率: $0.01\mu\text{V}$
 输入阻抗: $\geq 50\text{M}\Omega$
 视极化率测量精度: $\pm 1\% \pm 1$ 个字
 SP补偿范围: $\pm 2500\text{mV}$
 电流通道: 6A , $\pm 4\%$ ± 1 个字
 电流分辨率: $0.02\mu\text{A}$
 对50Hz工频干扰压制: 优于80dB
 发射功率上限: 6000W
 供电电压上限: 1000V
 供电波形: 脉宽1-60秒, 占空比1:1, 双极性
 电源: 14.8V 5200mAh 锂电池

Voltage measurement range: $\pm 2500\text{mV}$
 Voltage resolution: $0.01\mu\text{V}$
 Input impedance: $\geq 50\text{M}\Omega$
 Apparent susceptibility measurement accuracy: $\pm 1\% \pm 1$ word
 SP compensation range: $\pm 2500\text{mV}$
 Current channel: 6A , $\pm 4\%$ ± 1 word
 Current resolution: $0.02\mu\text{A}$
 Suppression of 50Hz frequency interference: better than 80dB
 Maximum transmit power: 6000W
 Upper limit of supply voltage: 1000V
 Power supply waveform: pulse width 1-60 seconds, duty ratio 1:1, bipolar
 Power supply: 14.8V 5200mAh lithium battery



主要用途 The main purpose:

用于探测各类金属矿与非金属矿的详查和普查勘探; 探测寻找地下水的详查和普查勘探; 环保调查、电力设计、工程勘探、地热勘探、煤矿采空区、地质灾害调查的勘探等。主要特点

- 1、精度高: 采用最新电路设计、单片机控制、自动降噪、数字滤波大大提高测量精度及稳定性。
- 2、操作简单: 人性化的人机界面, 内置各种装置的公式计算直读VP、IP、SP、RO、M、TH等相关参数。
- 3、参数多: 可以测量VP、IP、SP、RO、M、TH等相关参数。
- 4、装置齐全: 四极测深、中间梯度、联合剖面、五极、三极等十种装置类型。

It is used for the detailed survey and general survey exploration of various metal and non-metallic mines; the detailed survey and general survey exploration for detecting groundwater; the exploration of environmental protection survey, power design, engineering prospecting, geothermal prospecting, coal mine goaf, geological disaster Wait. main feature

1. High precision: The latest circuit design, single-chip control, automatic noise reduction, and digital filtering greatly improve the measurement accuracy and stability.
2. Simple operation: Humanized man-machine interface, built-in formula calculation of various devices, direct reading VP, IP, SP, RO, M, TH and other related parameters.
3. Many parameters: VP, IP, SP, RO, M, TH and other related parameters can be measured.
4. Complete equipment: ten types of equipment including four-pole sounding, intermediate gradient, joint profile, five-pole, and three-pole.

ADMT-6B型激电仪

ADMT-6B Multi- Function DC Resistivity and IP (Induced Polarization) instruments



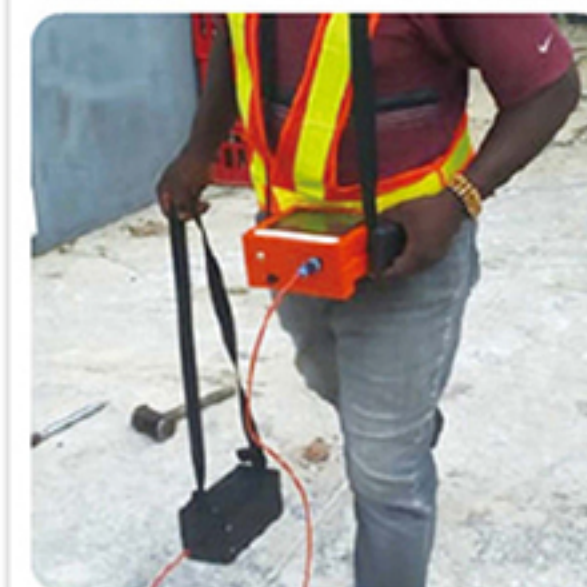
上海艾都慧测智能科技有限公司



客户来访及使用现场 Customers visit and use the site

我公司仪器深受国内外客户喜爱，纷纷来司考察订货

The instruments of our company are loved by domestic and foreign customers, and they come to our company for inspection and order



艾都应用软件

现场绘制2D/3D图、切片图，AI自动分析

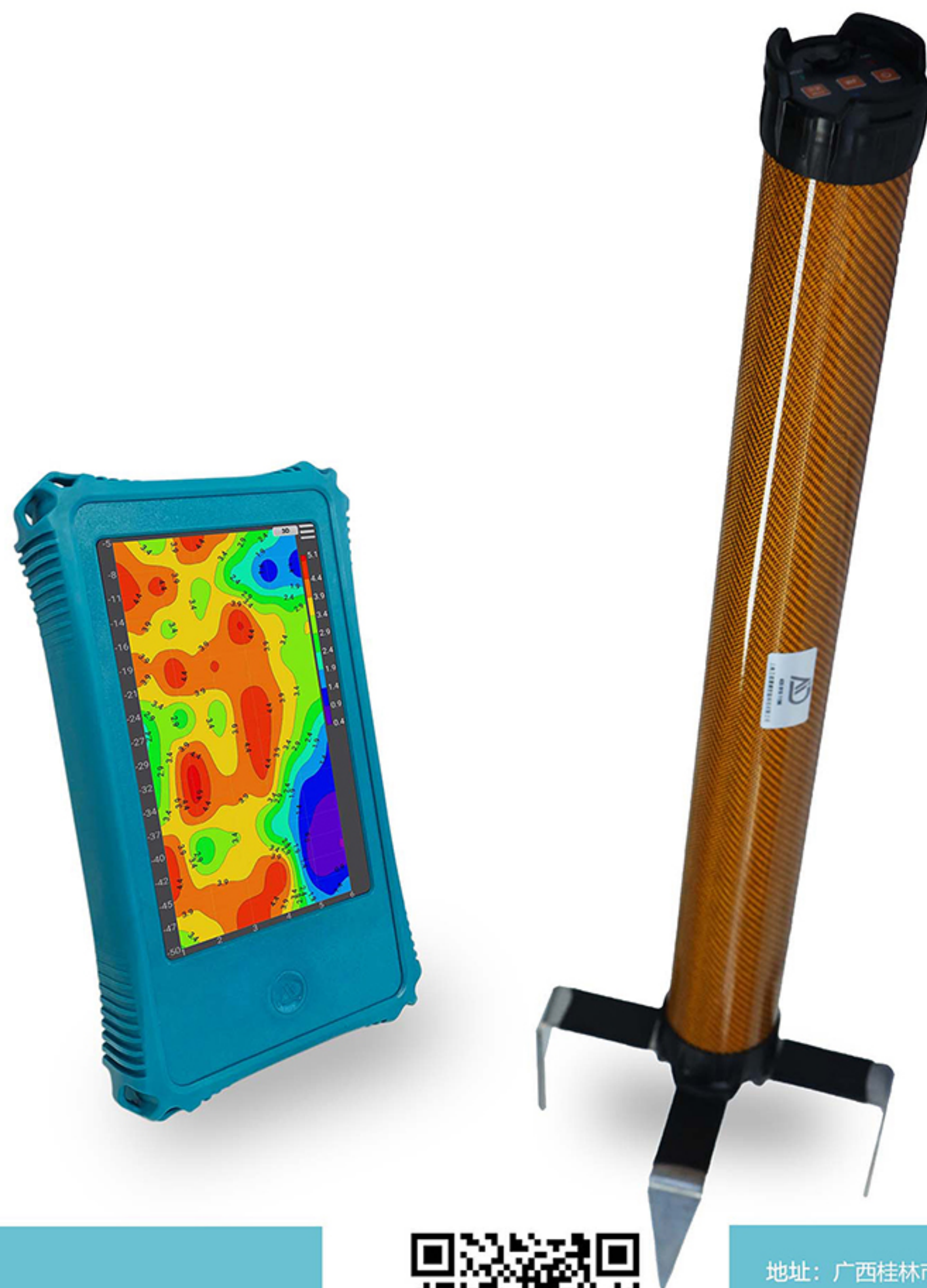
艾都慧测APP、艾都找水APP等多款集物探仪器数据采集、数据修正处理的智能化处理软件，内置曲线图、二维、三维制图模块，快速为现场分析绘制曲线图、二维图、三维图。操作简单、成图快、数据处理准确等特点。与仪器通过蓝牙交互，在现场无需网络，在WiFi和4G网络的环境可以把数据备份在云端或电脑中备份和再处理。

Drawing curves and color maps in real time, Expert online analysis function.



艾都软件应用中心

扫描下载免费使用
Scan QR code for free



地址：上海市闵行区曹建路169号E栋3楼

Office Address: 3rd Floor, Building E, No.169, Caojian Road, Minhang District, Shanghai

电话：400-816-1196 Office telephone: 400-816-1196

网址/WEB: <http://www.aidush.com>



地址：广西桂林市七星区七里店路桂林国家大学科技园5栋4楼

Office Address: 4th Floor, Building 5, Guilin National University Science and Technology Park, Qilidian Road, Qixing District, Guilin City, Guangxi

电话：400-816-1196 Office telephone: 400-816-1196

网址/WEB: <http://0773lg.org.cn>